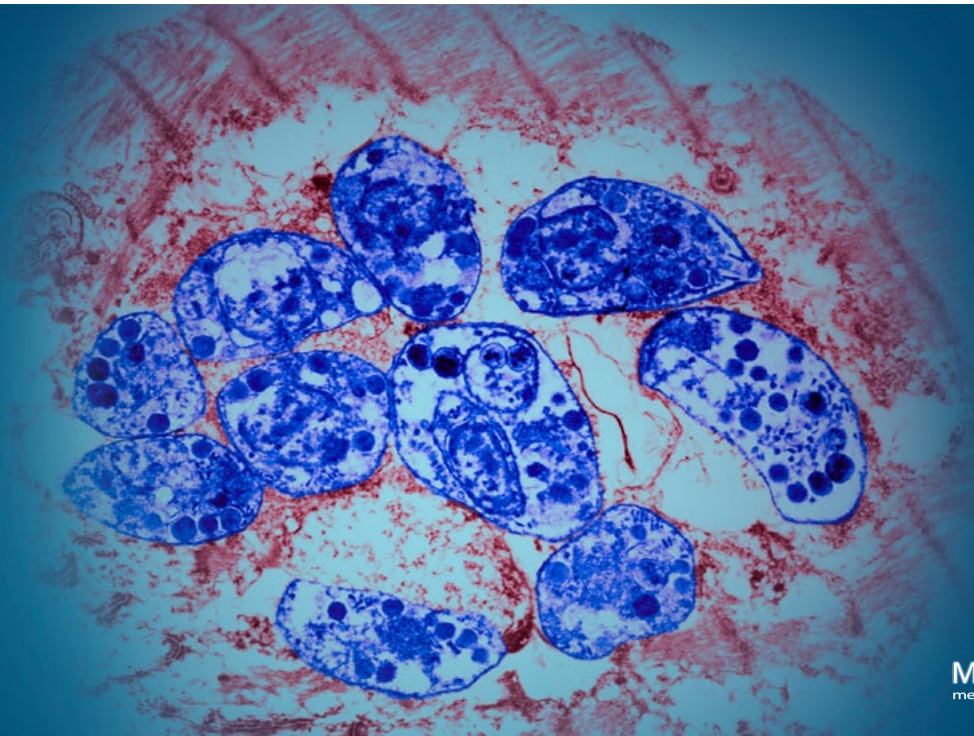


ELISA-VIDITEST *Toxoplasma gondii*



Meridian Healthcare®
medical diagnostics and equipment

Toxoplasmosis of the heart in AIDS, TEM

VIDIA new immunoenzymatic kits

- intended for qualitative and semiquantitative detection of specific IgA, IgM and IgG antibodies and determination of IgG avidity in human serum and plasma.

... the way to
the correct
results



IgA
ANTIBODY
RESPONSE

evidence for ongoing
acute infection



IgM
ANTIBODY
RESPONSE

evidence for ongoing
acute infection



IgG
ANTIBODY
RESPONSE

evidence for a later phase of
acute and past infection

Serological diagnostics

In immunocompetent, immunodeficient patients and pregnant women, serological methods are the basis for the diagnostics of toxoplasmosis, a serious parasitosis caused by *T. gondii*. Interpretation of test results is very important for accurate determination of the phase of the infection. It enables orientation in the dynamics of specific anti-toxoplasmic antibodies IgA, IgG and IgM, or IgE, which are formed in different time stages from the onset of the infection and persist for various time length.

Benefits of the kits

- Qualitative and semiquantitative evaluation of antibodies
- Determination of IgG avidity



ELISA-VIDITEST

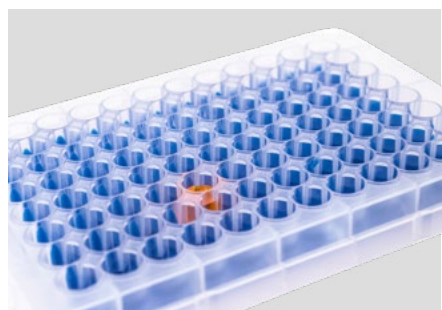
Kits come from our own research, development and production.

We are VIDIA spol. s r. o. Czech biotechnological company with a wide range of kits for diagnostic examination. We develop our products with high quality.

ELISA-VIDITEST Toxoplasma gondii

Toxoplasmosis is currently one of the most common zoonoses in the world. There are two distinguishable basic clinical forms according to the mode of the infection, which differ in clinical symptoms and course: toxoplasmosis acquired prenatally (congenital) and postnatally (acquired). The congenital form occurs mainly when a woman first becomes infected with toxoplasmosis during or just before pregnancy. The risk of the infection is influenced by a woman's behavioral and eating habits and hygiene habits. The symptomatology of toxoplasmosis further depends on the time of gestation and the degree of organogenesis of the fetus.

ELISA-VIDITEST kits are intended to differentiate between primary and underwent infections. As a part of the TORCH panel, they are intended for the differential diagnostics of vertically transmissible infections from mother to fetus. **Low IgG antibody titer and high avidity at the beginning of pregnancy indicate a latent infection. Acute infection is characterized by high titers of IgA, IgM antibodies and low avidity IgG antibodies.** In the first months the newborn usually has transferred maternal IgG, which gradually decreases and reach negative values only after several months of life, most often between the 9th and 12th month.



1. step

- Preparation of reagents and samples
- Dilution, pipetting and the whole measuring process occurs in the VIDIMAT analyser completely automatically

2. step

- Pipetting of 100 µl controls and diluted samples into wells
- Binding of primary antibodies to antigens occurs on the solid surface of the wells
- Incubation for 30 minutes at 37 °C
- Suction and washing of the wells 4× 250 ml with the washing solution

3. step

- Pipetting of 100 µl of peroxidase conjugate
- Binding of secondary antibody labelled by an enzyme to the primary antibody occurs during incubation
- Incubation for 30 minutes at 37 °C
- Suction and washing of the wells 4× 250 ml with the washing solution

4. step

- Pipetting of 100 µl of chromogensubstrate solution TMB
- Reaction of enzyme and substrate occurs
- Incubation for 15 minutes at RT
- Pipetting of 100 µl of the STOP solution

5. step

- Measurement of absorption at 450/620-690 nm in 10 minutes from stopping the reaction
- Evaluation of the test result occurs completely automatically in VIDIMAT analyser

Benefits of the measurement

- Qualitative and semiquantitative determination of IgA, IgM and IgG antibodies
- Determination of avidity of IgG antibodies
- Sample: serum, plasma
- High sensitivity and specificity of the kits
- Unified incubation times, temperatures, reagents for all ELISA-VIDITEST and MONO-VIDITEST
- Manual or automatic test processing in our analyzer VIDIMAT



VIDIMAT

We provide a precise automatic analyser for easy solutions of the infection serology automatization in cassette and microtiter plate format.

VIDIA kits

CE 1023 IVD

REF	Products	Evaluation	Incubation	Number of tests	VIDIMAT
ELISA-VIDITEST					
ODZ-480	anti-Toxoplasma gondii IgA	semi	30' / 30' / 15'	96	✓ NEW
ODZ-481	anti-Toxoplasma gondii IgG	semi	30' / 30' / 15'	96	✓ NEW
ODZ-482	anti-Toxoplasma gondii IgG and avidity IgG	semi	30' / 15' / 30' / 15'	96	✓ NEW
ODZ-483	anti-Toxoplasma gondii IgM	semi	30' / 30' / 15'	96	✓ NEW



VIDIA spol. s r.o.
Nad Safinou II 365, 252 50 Vestec
Czech Republic



Meridian Healthcare srl
Via Caronda, 446 - 95100
Catania - ITALY